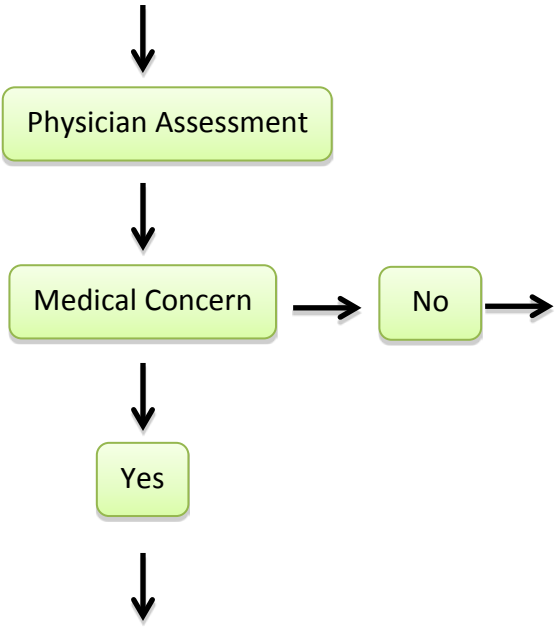


Delta Community Referral Guide for Children & Youth with Emotional/Behavioural Concerns



Further Medical Consultation
 (Suspected mental illness or a mental health concern that significantly impairs functioning in a number of areas (e.g. home, school, social interactions, etc.)

Referral to Child and Youth Mental Health Walk in:
 Wednesdays 9am - noon;
 1-3:30 pm
 604- 940-7900

